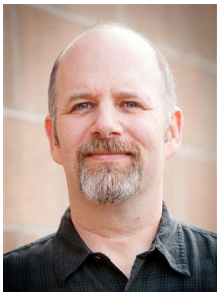




Statewide Special Education Multicultural Conference

SPONSORED BY OHIO COALITION FOR THE EDUCATION OF CHILDREN WITH DISABILITIES & CLEVELAND METROPOLITAN SCHOOL DISTRICT

- ◆ Overview of special education categories and key areas
- ◆ Learn special education qualification issues that are directly related to language learners
- ◆ Discussion of the ELL Critical Data Process related to special education referral versus interventions
- ◆ Guidance in understanding whether the concern is related to language acquisition or the need for a special education referral



DON'T MISS THIS CONFERENCE WITH STEVEN GILL!

Steven Gill has worked as a school psychologist since 1993 and is experienced in the areas of emotional/behavioral disabilities, autism, and gifted children. He has also worked extensively with students who are English Language Learners (ELLs). His work and research have been published, and he has presented his research at various conferences. Through extensive graduate work, he created the ELL Critical Data Process. Steven has trained over 3,000 educators on the process across more than 50 school districts. He is currently with the Kent School District in Washington State.

April 30 & May 1, 2018

Office of Professional Development
Cleveland Metropolitan School District
1340 East 79th Street., Cleveland, Ohio 44103

“English Language Learners: Referral or Not”

9:00 a.m. to 3:30 p.m. April 30 K-12 Version

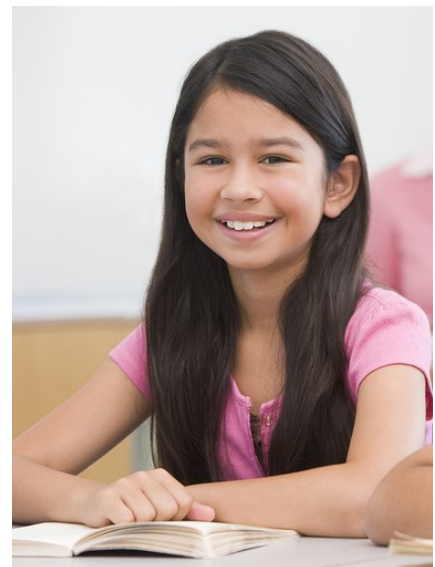
[REGISTER HERE NOW ►](#)

9:00 a.m. to 12:00 p.m. May 1 Preschool Version

[REGISTER HERE NOW ►](#)

Lunch is on your own

Questions? Contact Connie Hudson
ocecdcsh@embarqmail.com
or no computer access 937-842-2150



Contact hours certificates will be available following the completion of the conference and will be sent to the email you provide approximately 6-8 weeks following the conference: